



Cornerstone Court, Hemming Street, Whitechapel, E1 5BL

£470 Per Week

A 2 double bedroom apartment for rent located between Whitechapel E1 and Bethnal Green E2, situated a short walk into Brick Lane.

Open plan reception room with access to balcony, modern fitted kitchen, modern bathroom suite and 2 double bedrooms.

Short walk into the City, walk to 3 tube stations (Whitechapel, Bethnal Green and Stepney Green) and Bethnal Green overground station.

Comes furnished.

PROPERTY AVAILABLE FROM 28.08.2024

- 2 Double Bedrooms
- Close To The City
- Balcony
- Modern Kitchen
- Comes Furnished
- Walk To 3 Tube Stations
- Available From 28.08.2024
- Short Walk To Brick Lane
- Walk to supermarket & shops

Cornerstone Court, Hemming Street, Whitechapel, E1 5BL



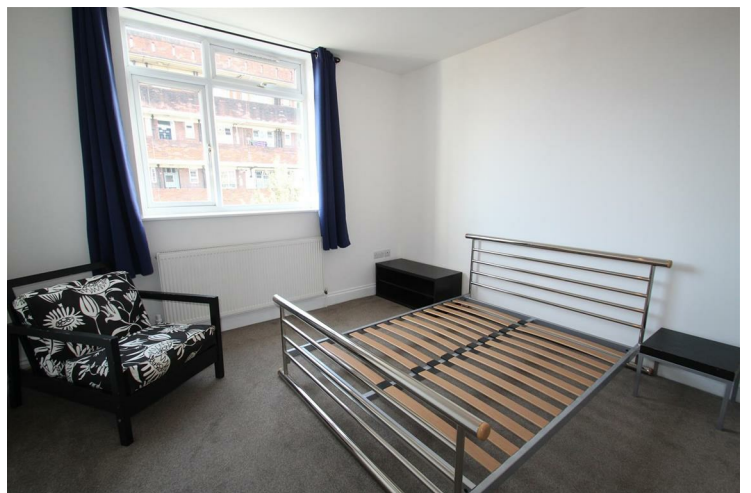
CORNERSTONE COURT



BEDROOM 1



BATHROOM



BEDROOM 2



BEDROOM 1



BEDROOM 2

Cornerstone Court, Hemming Street, Whitechapel, E1 5BL



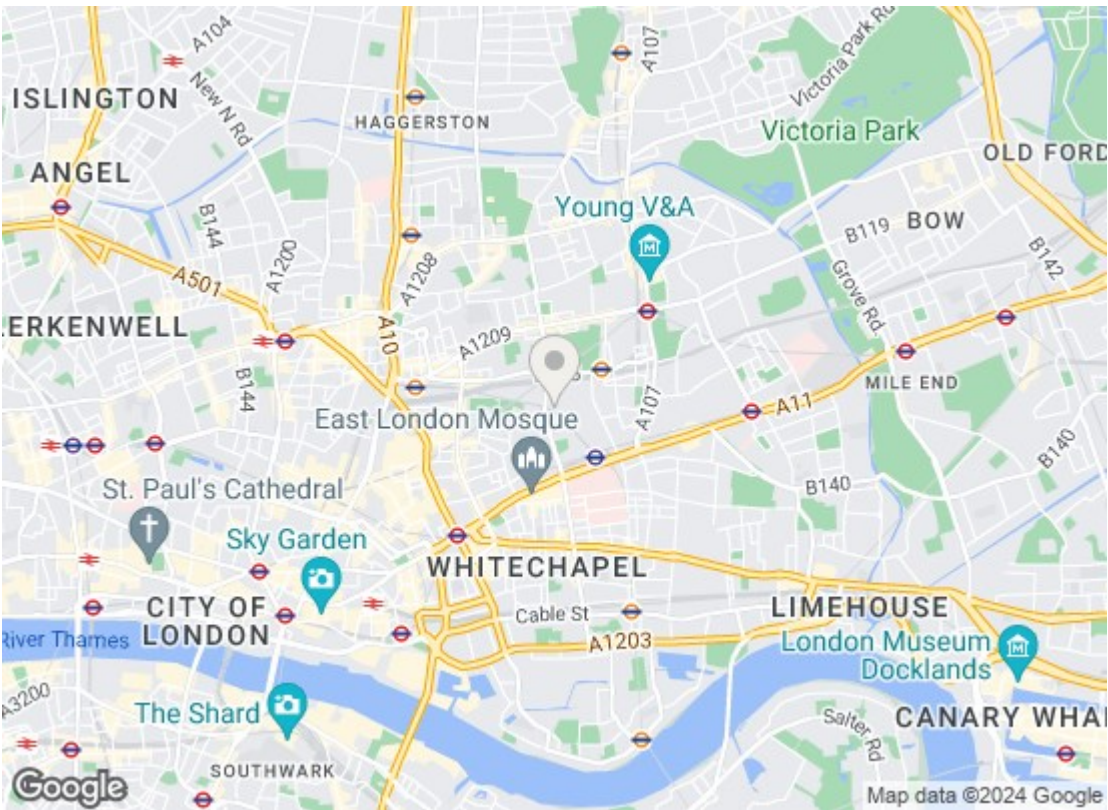
RECEPTION ROOM



RECEPTION ROOM



KITCHEN



Energy Efficiency Rating		
	Current	Potential
Very energy efficient - lower running costs		
(92 plus) A		
(81-91) B	81	82
(69-80) C		
(55-68) D		
(39-54) E		
(21-38) F		
(1-20) G		
Not energy efficient - higher running costs		
England & Wales		EU Directive 2002/91/EC
Environmental Impact (CO ₂) Rating		
	Current	Potential
Very environmentally friendly - lower CO ₂ emissions		
(92 plus) A		
(81-91) B		
(69-80) C		
(55-68) D		
(39-54) E		
(21-38) F		
(1-20) G		
Not environmentally friendly - higher CO ₂ emissions		
England & Wales		EU Directive 2002/91/EC

We have prepared these property particulars as a general guide to a broad description of the property. They are not intended to constitute part of an offer or contract. We have not carried out a structural survey and the services, appliances and specific fittings have not been tested. All photographs, measurements, floorplans and distances referred to are given as a guide only and should not be relied upon for the purchase of carpets or any other fixtures or fittings. Lease details, service charges and ground rent (where applicable) and council tax are given as a guide only and should be checked and confirmed by your Solicitor prior to exchange of contracts.